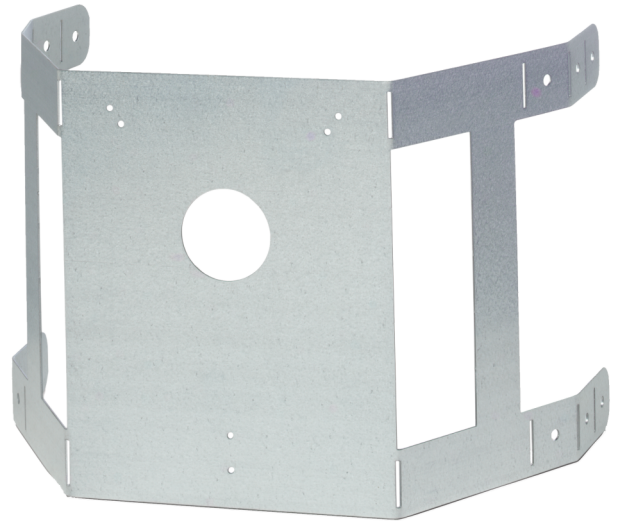


FDD710MB

Mounting Bracket For FDD710, Irregular Duct Shapes

The FDD710MB allows the FDD710 duct detector to be mounted on irregular shaped or circular ducts. Four tabs are easily bent to adapt to the shape of the duct. The FDD710 then mounts on the flat surface.



Details

- Four tabs adapt to the shape of the duct

FDD710MB

Mounting Bracket For FDD710, Irregular Duct Shapes

Technical specifications

Environmental

Environment	Indoor
-------------	--------

As a company of innovation, UTC Fire & Security reserves the right to change product specifications without notice. For the latest product specifications, visit UTC Fire & Security online or contact your sales representative.

30 April 2019 - 12:06



**United
Technologies**

Climate | Controls | Security