



SpeedFace-V3L Series

Linux-Based Hybrid-Biometric Access Control & Time and Attendance Terminal with Visible Light Facial Recognition



Facial Recognition



RFID



Fingerprint

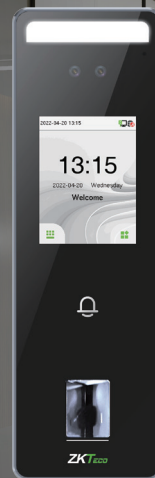


QR Code

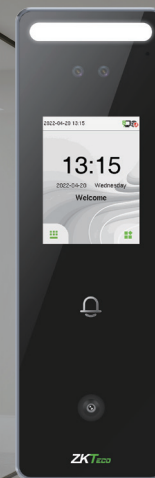


IP65 dust & waterproof rating

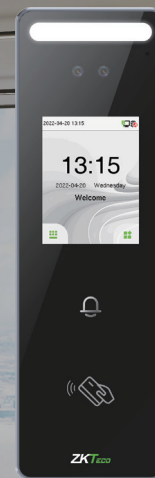
Compatible with
 ZKBio Access



SpeedFace-V3L



SpeedFace-V3L [QR]



SpeedFace-V3L [RFID]

SpeedFace-V3L series device is a visible light face access control stand-alone terminal. SpeedFace-V3L supports facial recognition and fingerprint. While SpeedFace-V3L [QR] supports QR code module, and SpeedFace-V3L[RFID] support RFID verification. This series is also equipped with ultimate anti-spoofing algorithm for facial recognition against all types of fake photos and videos attack.

SpeedFace-V3L series is compatible with ZKBio Access Software and support IP65 water and dust resistance.

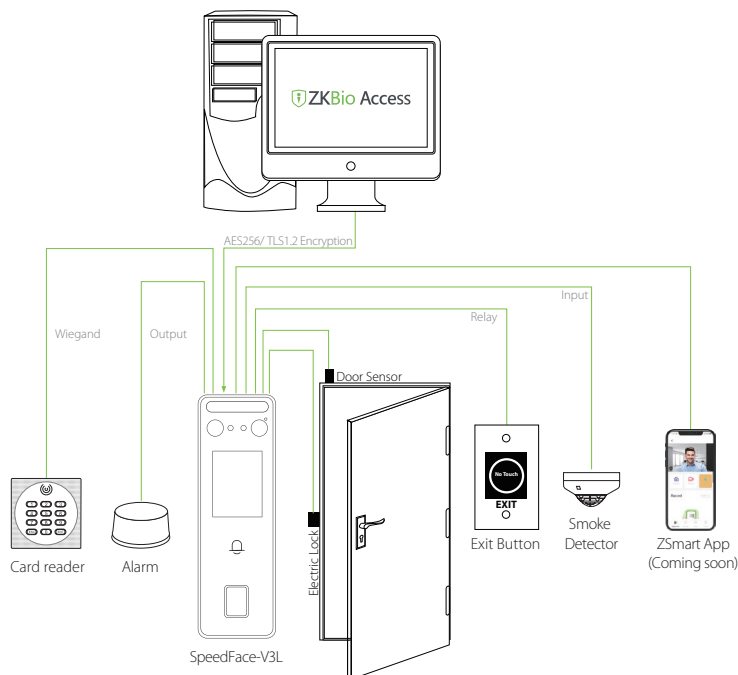
Features

- IP65 water and dust resistance
- Operating temperature from -5°C to 45°C
- Support facial / fingerprint / scramble QR Code / RFID
- Available card modules: 125KHz ID card / 13.56MHz IC card
- Fill Light with adjustable brightness
- On Board Web Server for system configuration
- Supports up to 500 facial / 3,000 fingerprint / 3,000 RFID card / 200,000 records

Specifications

Product Model	SpeedFace-V3L	SpeedFace-V3L[QR]	SpeedFace-V3L[RFID]
Display	2.4-inch touch Screen	2.4-inch touch Screen	2.4-inch touch Screen
Biometric	Face/Fingerprint	Face Only	Face Only
QR Code Module	/	QR code, Bar code, PDF417(Optional), Data matrix(Optional), MicroPDF417(Optional), Aztec(Optional)	/
RFID	ID card(Optional), IC card(Optional)	ID card(Optional), IC card(Optional)	ID card(Standard), IC card(Optional)
User Capacity	3,000 (Optional: 10,000)	3,000 (Optional: 10,000)	3,000 (Optional: 10,000)
Card Capacity	3,000 (Optional: 10,000)	3,000 (Optional: 10,000)	3,000 (Optional: 10,000)
Face Capacity	500 (Optional: 1,500)	500 (Optional: 1,500)	500 (Optional: 1,500)
Fingerprint Capacity	3,000 (Optional: 5,000)	/	/
Logs Capacity	200,000	200,000	200,000
Facial Recognition Algorithm	ZKFace 3.5		
Facial Recognition Speed	<1s		
Facial Recognition Distance	0.5m to 2m		
Communication	TCP/IP, WiFi(Optional), Wiegand Input/Output,RS485		
Operation System	Linux		
Standard Functions	ADMS, DST, Camera, 14-digit User ID, Access Levels, Groups, Holidays, Anti passback, Record Query, Tamper Switch Alarm, Multiple Anti-Passback		
Hardware	1.2GHz Dual Core CPU, 256MB RAM/512MB Flash, 1MP Binocular Camera Adjustable LED Fill Light		
Access Control Interface	3rd Party Electric Lock, Door Sensor, Exit Button, Alarm output, Auxiliary Input		
Power Supply	12V 3A	12V 3A	12V 3A
Ingress Protection Rating	IP65	IP65	IP65
Operating Temperature	-5°C to 45°C	-5°C to 45°C	-5°C to 45°C
Operating Humidity	10% to 90% RH	10% to 90% RH	10% to 90% RH
Dimensions(L*W*D)	185*58.5*20mm	185*58.5*20mm	185*58.5*20mm
Supported Softwares	ZKBio Access, Mobile App	ZKBio Access, Mobile App	ZKBio Access, Mobile App

Configuration



Dimensions (mm)

