

PIR / MICROWAVE COMBINATION DETECTOR
RX CORE SERIES
RXC-DT

RXC-DT-X5 : 10.525GHz
RXC-DT-X8 : 10.587GHz
RXC-DT-X7 : 13.700GHz

- EN **INSTALLATION INSTRUCTIONS**
- FR **CONSIGNES D'UTILISATION**
- DE **INSTALLATIONSANLEITUNG**
- IT **ISTRUZIONI INSTALLAZIONE**
- CZ **INSTALAČNÍ NÁVOD**
- PT **INSTRUÇÕES DE INSTALAÇÃO**
- NL **INSTALLATIE INSTRUCTIES**
- ES **INSTRUCCIONES DE INSTALACIÓN**
- SE **INSTALLATIONSANVISNINGAR**
- PL **INSTRUKCJA INSTALACJI**

Warning

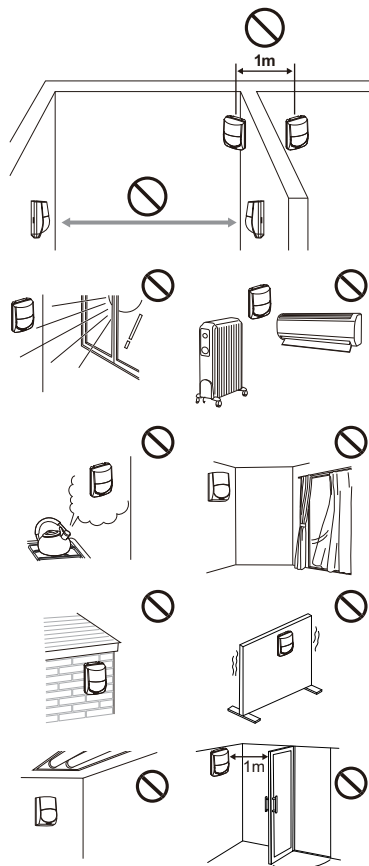
Warning

Caution

The nix sign indicates prohibition.

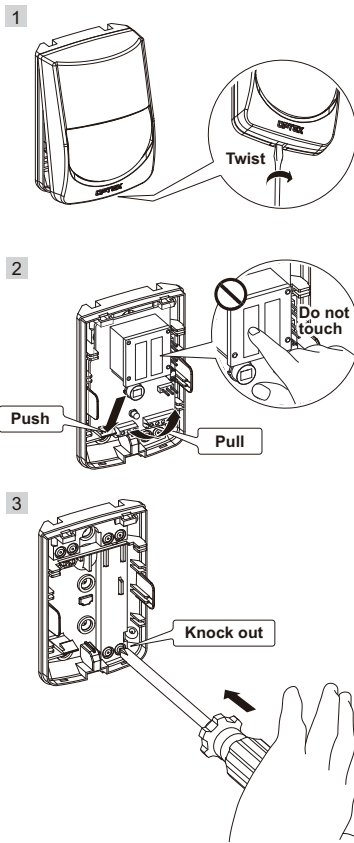
1 INSTALLATION HINTS

Conseils d'installation
Installations-Tipps
Indicazioni installazione
Pokyny pro správné umístění
Dicas de instalação
Installatietips
Recomendaciones de instalación
Típs vid installation
Wskazówki instalacyjne

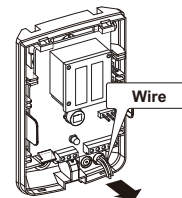


2 INSTALLATION

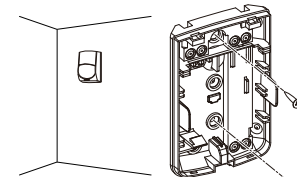
Installation
Installation
Installazione
Instalace
Instalação
Installatie
Instalación
Installation
Instalacja



4

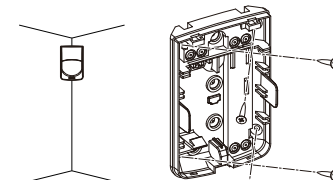


Backside mounting >>



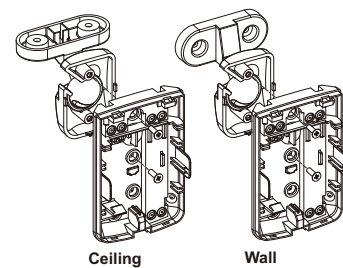
Note>>
Mounting screws are not included.

Corner mounting >>



Note>>
Mounting screws are not included.

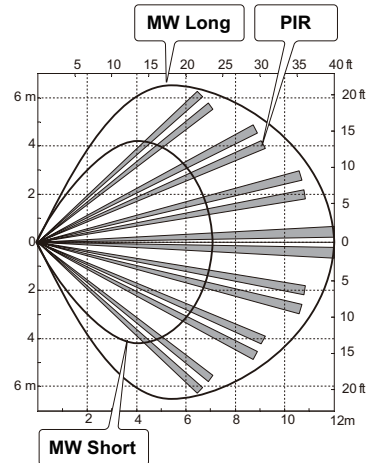
Bracket (included) mounting >>



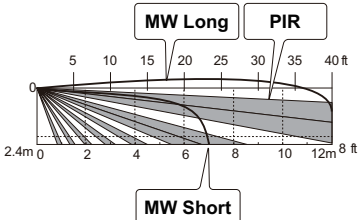
3 DETECTION ZONE

Zone de détection
Erfassungsbereich
Zone di rilevazione
Detekční diagram
Zona de detecção
Detectiezone
Zona de detección
Bevakningsområde
Charakterystyka Detekcji

TOP VIEW

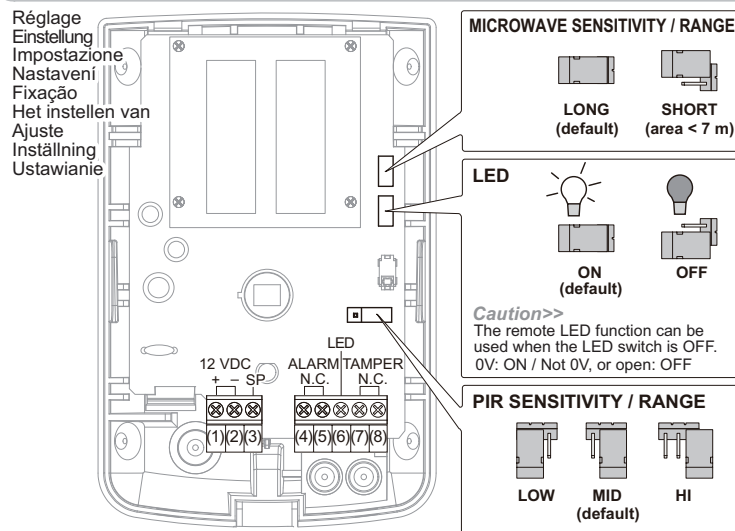


SIDE VIEW



4 SETTING

Réglage
Einstellung
Impostazione
Nastavení
Fixação
Het instellen van
Ajuste
Inställning
Ustawianie

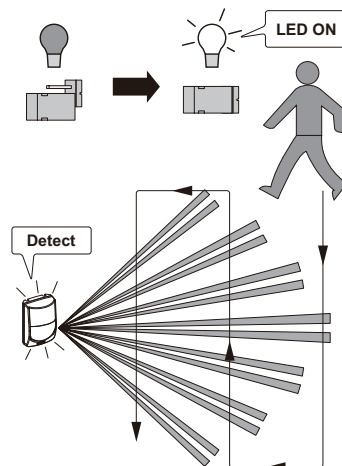


■ Power wire maximum length (using one unit on a single wire)

WIRE GAUGE	12V DC	14V DC
AWG22 (0.33 mm ²)	520 m (1,700 ft)	1130 m (3,700 ft)
AWG20 (0.52 mm ²)	820 m (2,690 ft)	1,780 m (5,830 ft)
AWG18 (0.83 mm ²)	1,310 m (4,290 ft)	2,850 m (9,350 ft)

6 WALK TEST

Test de marche
Gehtest
Test camminata
Zkouška krokovým testem
Teste de funcionamento
Loopstest
Prueba de funcionamiento
Gångtest
Test przejścia



Note>>
Conduct a walk test at least once a year.

5 WIRING

Câblage
Verdrahtung
Impianto elettrico
Zapojení
Fiação
Bedrading
Cableado
Inkoppling
Okablowanie

(1) (2)	(3)
Power input Alimentation Eingangslleistung Tensione di alimentazione Napájecí napětí alimantação Voeding Entrada de alimentación Spänning Wejście zasilania	Spare Pièce de rechange Ersatzteil Ricambi Volná svorka Reserva Reserv Contacto Libre Reserv Styk zapasowy
(4) (5)	(6) (7) (8)
Alarm output (N.C.) Sortie d'alarme (N.C.) Alarmausgang (N.C.) Uscita allarme (N.C.) Poplachový kontakt (N.C.) Saída do alarme (N.C.) Alarm (N.C.) Salida de alarma (N.C.) Larmutgång (N.C.) Wyjście alarmowe	Remote LED Déporté à LED Remote-LED Remote LED Dálkový LED Remoto LED Remote LED LED remoto Avlägsna LED Zdalne LED
	Tamper (N.C.) Autoprotection (N.C.) Manipulationsschutz (N.C.) Antiapertura (N.C.) Sabotážní kontakt (N.C.) Tamper (N.C.) Sabotage (N.C.) Interruptor contra sabotaje (N.C.) Sabotageutgång (N.C.) Styk sabotážowy (N.C.)

