

RISCO



BWare™ Bus

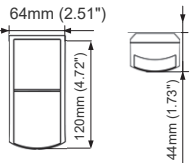
Model:
RK515DTBGL
BWare BUS DT



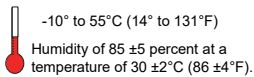
9-16VDC
Power output: 20 dBm max.
Frequency: 24 GHz



12mA at 12VDC (typical)
34mA at 12VDC (max.)



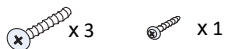
100gr. (3.5oz.)



-10° to 55°C (14° to 131°F)

Humidity of 85 ±5 percent at a temperature of 30 ±2°C (86 ±4°F).

EN50131-2-4 Grade 2, Environmental Class II,
PD6662:2017
Certification body: Applicata Test & Certification



EN Introduction and Features

The BWare BUS DT detector is a motion detector designed for installation as an addressable detector on the RISCO BUS, incorporating Anti-Cloak™ Technologies (ACT™).

- MW K-Band and PIR technologies
- Anti-Cloak Technology (ACT™)
- Green Line™ for disabling the MW during disarm
- Cover tamper
- Corridor and Curtain lenses (optional)
- Remote Control & Diagnostics
- 15m (90') coverage

IT Introduzione e caratteristiche

BWare BUS DT è un rivelatore di movimento a doppia tecnologia indirizzato compatibile con il BUS RISCO che include tecnologia Anti-Cloak™ (ACT™).

- Tecnologia a microonde (MW in banda K) e infrarosso passivo (PIR)
- Tecnologia Anti-Cloak (ACT™)
- Funzione "Green Line" per disabilitare le emissioni della sezione microonda a sistema disinserito
- Tamper contro l'apertura
- Lenti a Tenda e Corridoio (opzionali)
- Diagnostica e Controllo Remoto
- Modelli da 15m (90')

ES Introducción y características

El detector BWare BUS DT es un detector de movimiento diseñado para su instalación como detector direccionable en el BUS de RISCO, que incorpora las tecnologías de Anti-Cloak™ (ACT™).

- Doble tecnología MW (Banda K) y PIR
- Tecnología Anti-Cloak (ACT™) para detectar intrusos camuflados
- GreenLine™ para deshabilitar el MW cuando el sistema esté desarmado
- Sabotaje contra la apertura
- Lentes de Pasillo y Cortina (opcionales)
- Control y Diagnósticos Remotos
- Cobertura 15m (90')

FR Introduction et caractéristiques

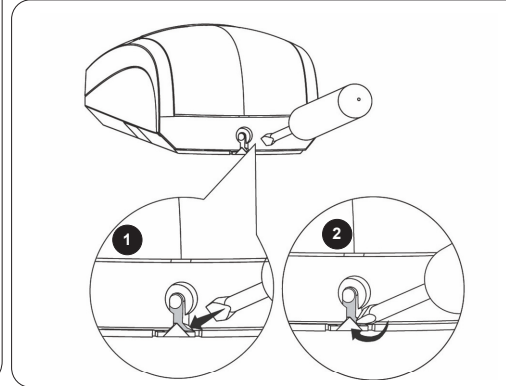
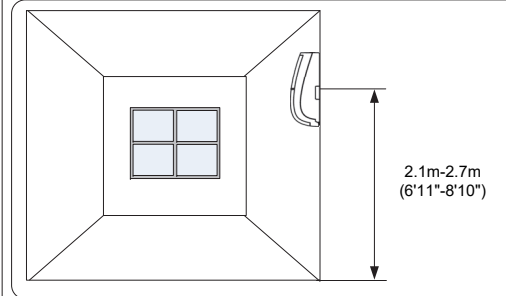
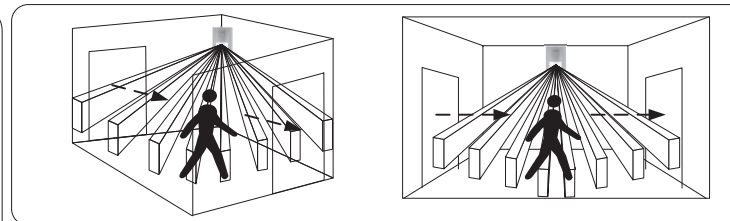
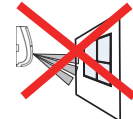
Le détecteur BWare BUS DT est un détecteur de mouvement destiné à être installé en tant que détecteur adressable sur le BUS RISCO, incorporant les technologies Anti-Cloak™ (ACT™).

- Technologies hyperfréquence Bande K et IR Passif
- Technologie Anti-Cloak™ (ACT™)
- Green Line™ pour désactiver l'hyperfréquence durant le désarmement
- Sabotage contre l'ouverture
- Lentilles couloir et rideau (optionnelles)
- Contrôle et diagnostic à distance
- Couverture 15m (90')

PR Introdução e características

O BWare BUS, detector de dupla tecnologia, é um detector de movimento projetado para ser instalado como detector endereçável ao RISCO Bus, incorporando tecnologia quanto Anti-Cloak™.

- Tecnologia Anti-Camuflagem (ACT™)
- Tecnologia GreenLine - Desativa MW (Microondas), quando o sistema é desativado
- Sabotagem contra a abertura
- Lentes de longo alcance e Cortina (opcional)
- Controle e diagnóstico remoto
- Modelo 15m (90')



BUS ADDRESS

ID	1	2	3	4	5
01	OFF	OFF	OFF	OFF	OFF
02	ON	OFF	OFF	OFF	OFF
03	OFF	ON	OFF	OFF	OFF
04	ON	ON	OFF	OFF	OFF
05	OFF	OFF	ON	OFF	OFF
06	ON	OFF	ON	OFF	OFF
07	OFF	ON	ON	OFF	OFF
08	ON	ON	ON	OFF	OFF
09	OFF	OFF	OFF	ON	OFF
10	ON	OFF	OFF	ON	OFF
11	OFF	ON	OFF	ON	OFF
12	ON	ON	OFF	ON	OFF
13	OFF	OFF	ON	ON	OFF
14	ON	OFF	ON	ON	OFF
15	OFF	ON	ON	ON	OFF
16	ON	ON	ON	ON	OFF
17	OFF	OFF	OFF	OFF	ON
18	ON	OFF	OFF	OFF	ON
19	OFF	ON	OFF	OFF	ON
20	ON	ON	OFF	OFF	ON
21	OFF	OFF	ON	OFF	ON
22	ON	OFF	ON	OFF	ON
23	OFF	ON	ON	OFF	ON
24	ON	ON	ON	OFF	ON
25	OFF	OFF	OFF	ON	ON
26	ON	OFF	OFF	ON	ON
27	OFF	ON	OFF	ON	ON
28	ON	ON	OFF	ON	ON
29	OFF	OFF	ON	ON	ON
30	ON	OFF	ON	ON	ON
31	OFF	ON	ON	ON	ON
32	ON	ON	ON	ON	ON

