

# PROS CS (Client-Server)

## Installation and Basic-configuration Guide

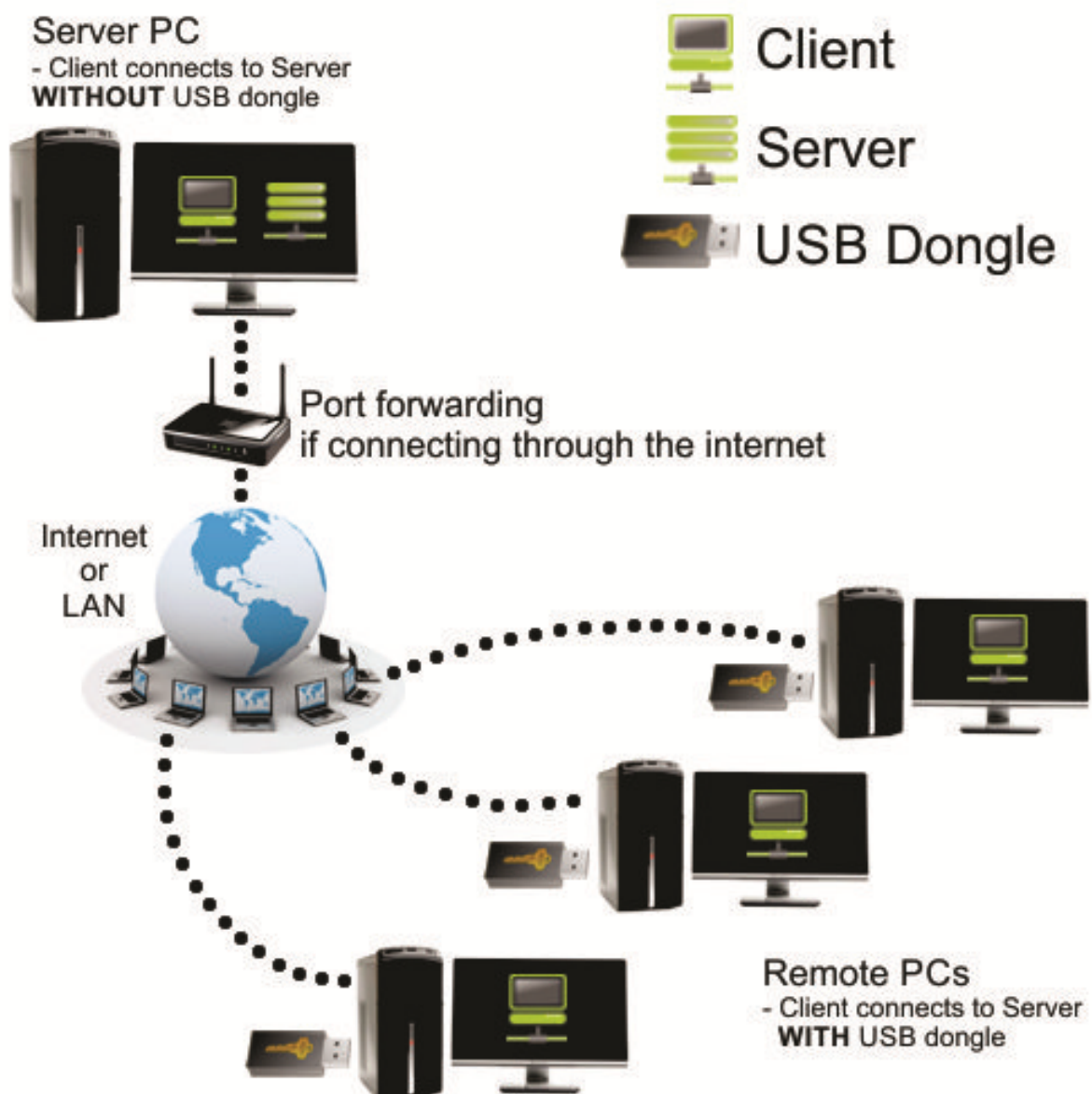
### Contents

PROS CS (Client-Server).....	1
Installation and Basic-configuration Guide.....	1
1. Overview .....	2
2. Intro.....	3
3. UPGRADING from PROS PLUS to PROS CS .....	3
4. PROS CS installation steps:.....	3
4.1 PROS CS installation requirements .....	3
4.2 PROS CS installation folder .....	3
4.3 PROS CS Products.....	4
4.4 PROS CS Database requirements .....	4
5. Basic configuration.....	5
5.1 PROS Server configuration .....	6
5.2 Database configuration.....	7
5.3 PROS Client configuration.....	9

## 1. Overview

PROS CS is Client-Server based software. The server is installed only in one PC (together with the client) and the client can be installed on more PCs (without installing the server on those PCs). The client running on the same PC as the server does not require USB Dongle to connect to the server. The client running on a remote PC requires USB Dongle to connect to the server. (All clients can connect to the server without the USB Dongle until 2014)

If you use the client from a remote PC, port forwarding needs to be done so the client can connect to the server. This is done in the router connected to the Internet. The Ports that need to be forwarded can be found in the PROS Server configuration (see chapter 5.1).



## 2. Intro

This document will guide you through the installation and basic configuration of PROS CS.

You can install the following products with this setup:

- PROS Client **only**
- PROS Client + PROS Server
- PROS Client + PROS Server + Web Server (for generating reports only)

## 3. UPGRADING from PROS PLUS to PROS CS

If you are already using PROS Plus and want to upgrade to PROS CS, all you need to do is uninstall PROS Plus and install PROS CS to the same location.

**Important note:** After uninstalling PROS Plus - do not move/delete the database folder and its contents. PROS CS will continue using the same database as PROS Plus.

## 4. PROS CS installation steps:

### 4.1 PROS CS installation requirements

PROS CS requires additional components to be installed in order to work properly. If some of the components are already installed, they will not be shown in this list (picture 1).



Picture 1

### 4.2 PROS CS installation folder

PROS CS installation folder can be changed during installation



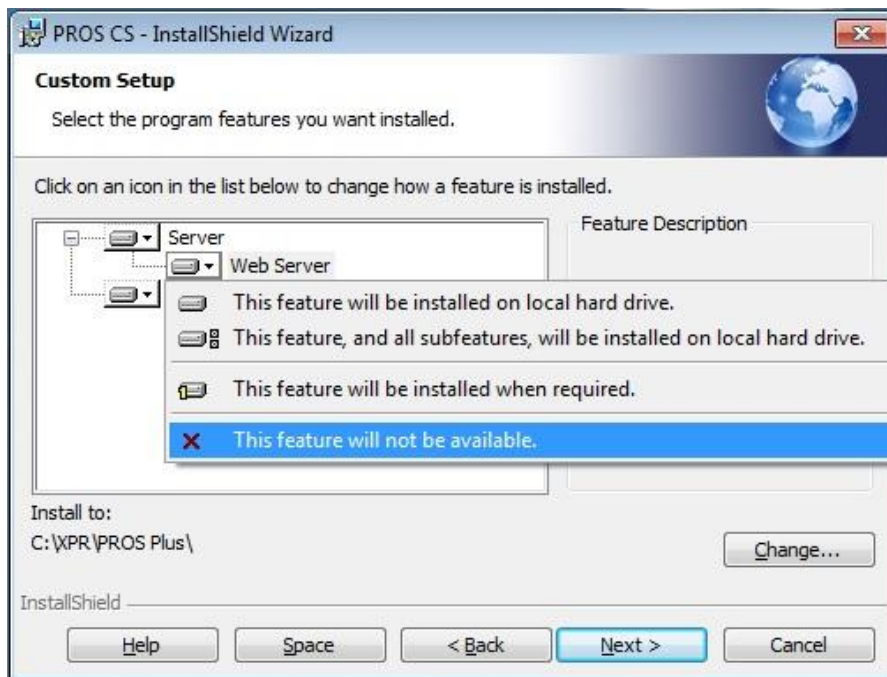
Picture 2

### 4.3 PROS CS Products

There are three products included in the PROS CS setup: PROS Client, PROS Server and Web Server.

- **PROS Client** is the software that connects to the PROS Server and it is used for configuring and maintaining hardware, users and other configurations.
- **PROS Server** is the software that communicates with the hardware and the clients (PROS Client software) and reads/writes data into the database.
- **Web Server** is the software used for generating reports from an internet browser (Internet Explorer, Google Chrome, Mozilla Firefox....).

The installation of PROS Server and Web Server is optional and if it is not required you can choose “**This feature will not be available**” from the setup window.



Picture 3

### 4.4 PROS CS Database requirements

PROS CS can run either with **Access 2007** database or with **SQL** database.

If it runs with Access database **NO** extra configuration or installation is needed.

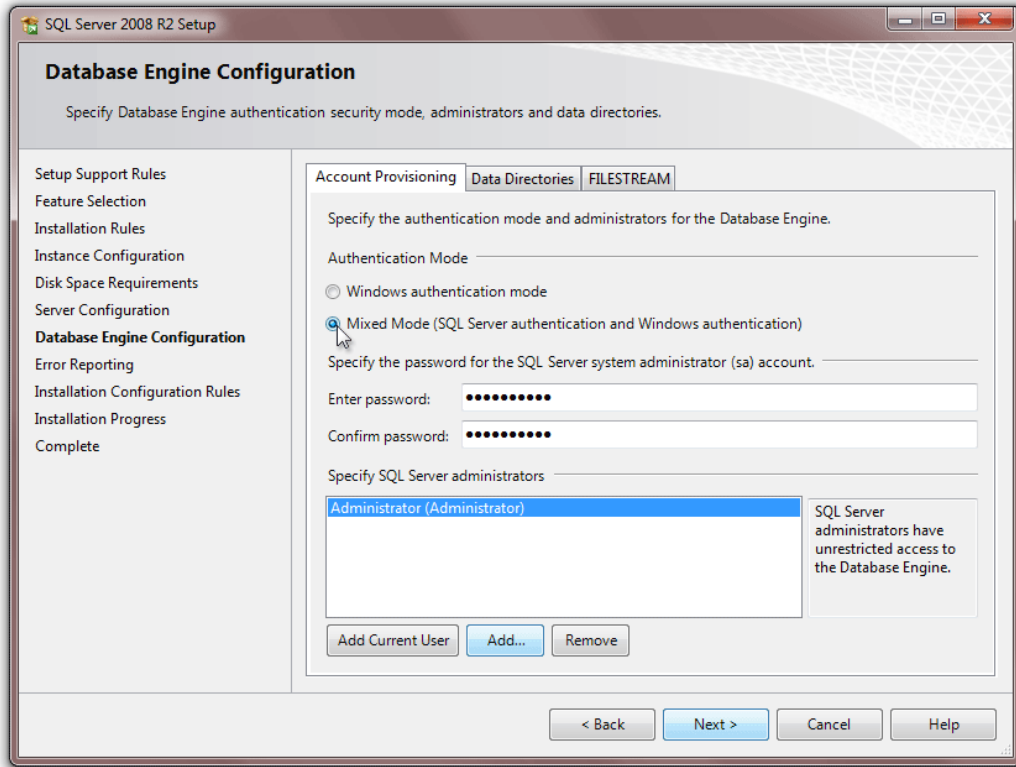
If it runs with SQL database and the database will be placed on the same PC as PROS Server, then installation of SQL Server Express is required. **The setting shown on picture 4 MUST be set when installing SQL Server.** The password entered in the field is required but it is not specified by PROS Server. So the person installing it can enter random password here (should write it down for future use of SQL Server). All other settings should be left as their default values.

**Minimum SQL requirements are SQL Server 2008 R2 or SQL Express 2008 R2.**

SQL Express 2008 R2 can be downloaded from

<http://www.microsoft.com/en-us/download/details.aspx?id=30438>

(Download the file - **SQLEXPRT\_x86\_ENU.exe**).

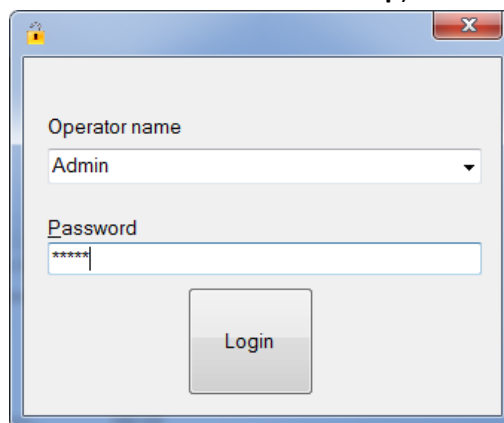


Picture 4

## 5. Basic configuration

If you want to change the PROS Server configuration or change the Database type (SQL or Access) you will need to start the **PROS CS Setup**.

(Start->All Programs->XPR->PROS CS->PROS CS Setup)



Picture 5

Default values for login are:

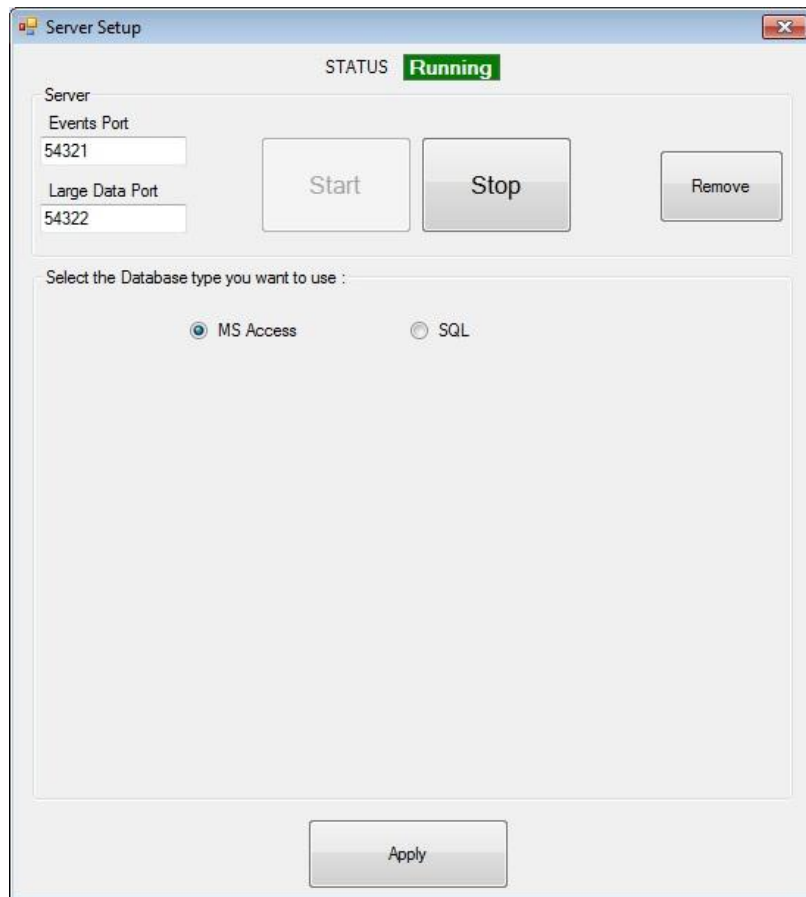
- Operator name: **Admin**
- Password: **admin**

and can be changed later in PROS Client.

## 5.1 PROS Server configuration

Here you can see the PROS Server **status** in the top of the window, the **ports** used for communication between PROS Client and PROS Server, and the buttons for starting, stopping and removing the PROS Server **service (PROS Server is running as a windows service, not as a standard windows application)**.

After installing the PROS Server, it is started automatically so you don't need to do extra configuration. But, if you can't connect with the PROS Client to the PROS Server, please first check the server status if it is RUNNING.



Picture 6

- **START** button – **registers** the PROS Server as a windows service and **starts** it immediately
- **STOP** button – **stops** the PROS Server
- **REMOVE** button – **stops** the PROS Server and **unregisters** it from windows services

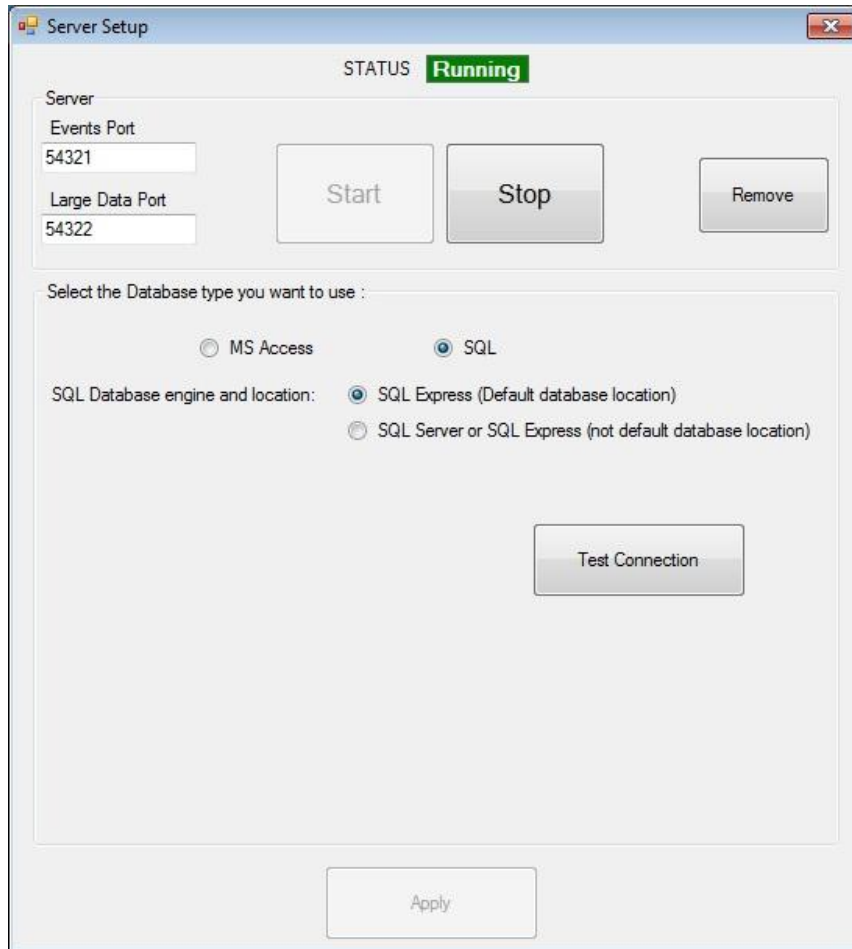
**Note:** You don't need to press the APPLY button after pressing the START, STOP or REMOVE button.

## 5.2 Database configuration

If you want to change the Database type used for storing data in the software you can choose from the options either MS Access or SQL.

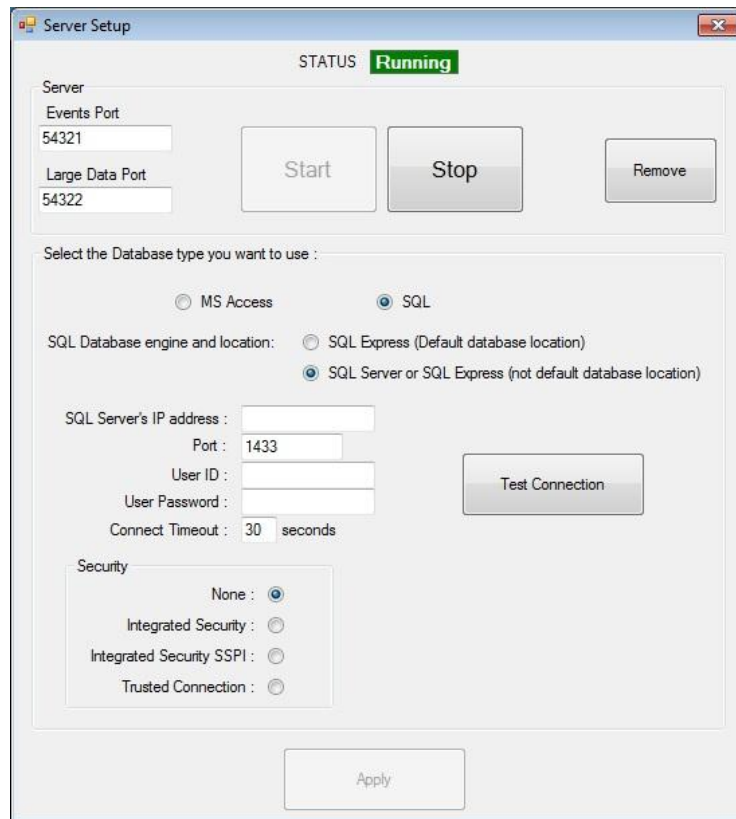
**WARNING:** When switching from Access to SQL or from SQL to Access – data is not transferred. You will have to enter all hardware and user configuration manually.

If SQL is chosen the following screen appears (picture 7)



Picture 7

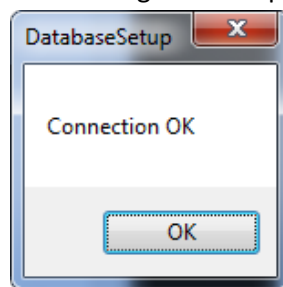
SQL database can be at its default location (in PROS CS installation folder) and attached to local SQL Server Express or it can be on a remote SQL Server and attached to it (the location of the database that needs to be attached on the remote SQL Server is: "XPR\PROS Plus\Blank Database"). If second option is chosen the following screen appears



Picture 8

Here, SQL Server address and login credentials are entered (these settings are provided by the SQL Server administrator).

After choosing SQL database location, connection with the server must be tested (**Test Connection** button) so that the settings can be applied.



Picture 9

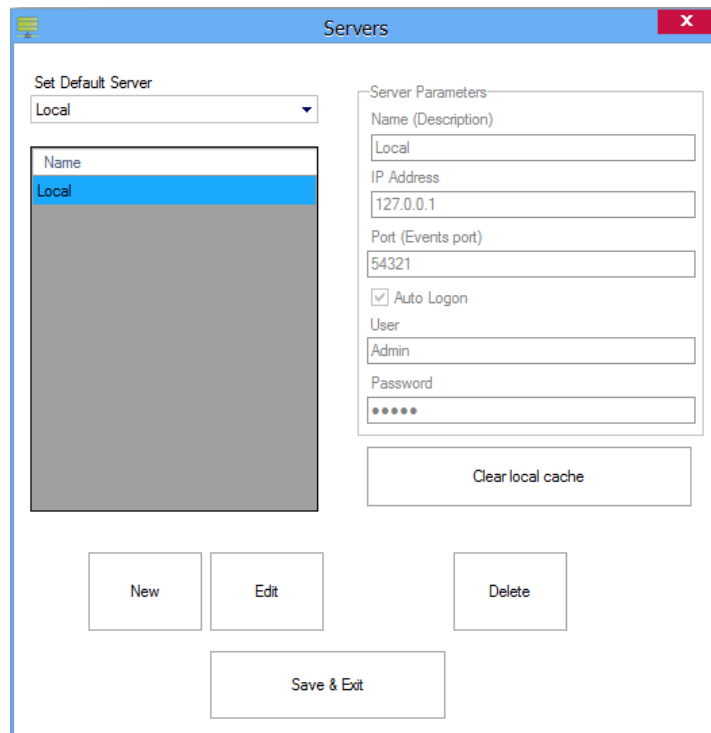
After this dialog appears, **Apply** button is enabled and database setup is finished. If some error dialog box appears instead of the one in the picture, something is not set correctly. Most common issues are:

- SQL Server is not installed on local PC (if **Default database location** chosen)
- SQL Server is installed but authentication mode is **Windows authentication mode** – not **Mixed mode** (see Picture 4)
- Problem in **local network/internet connection** (if **Not default database location** chosen).
- Not all parameters are correct – IP Address, Port, User, Password, Security... ( if **Not default database location** chosen).



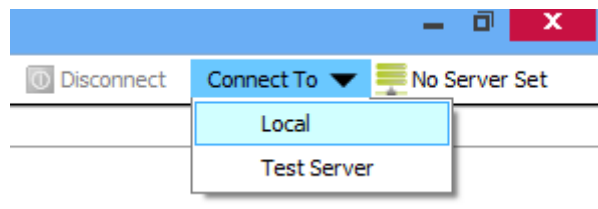
### 5.3 PROS Client configuration

In the Servers form (Settings->Servers) you can change or add new Servers. The default server is Local (Local = the Client is on the same PC as the Server). If your Server is on a remote PC (not the same PC as the Client) then you will need to add new Server with the IP address of the remote PC and the port configured in the Server Setup (default is 54321).



Picture 10

After configuring the Servers, you can choose a Server from the “Connect To” menu in the top-right corner of the Client. You can change a Server without closing the Client by clicking on it in the dropdown list. If you want to see info about the current server, just click on the icon next to the “Connect To” menu and an info form will be displayed onscreen.



Picture 11