

## Description

The ZP785-3 Analogue Addressable Callpoint is used to manually initiate a fire alarm. It is designed for indoor use and may be surface or recess mounted.

The red LED on the front indicates the status of the ZP785-3 (off = normal, flashing = active).

## Specification

Operating	Voltage range: 19.5 to 20.5 volts pulsed address line
Standby current:	400 $\mu$ A
Activated current:	450 $\mu$ A
Application:	Indoor use
EN60529 rating:	IP24D
Operating temp range:	-10 to 50 $^{\circ}$ C
Operating humidity range:	20% to 95% RH (non condensing)
Mounting:	Surface
Construction:	Moulded ABS

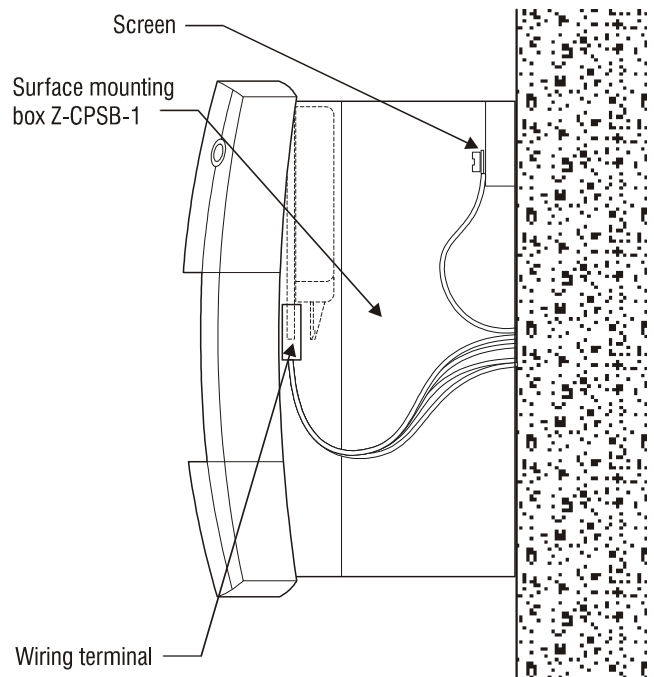
### Dimensions

Width:	89 mm
Height:	93 mm
Depth:	27.5 mm
Shipping weight:	125 g
Colour:	Red

### Accessories

- 4-way connector (included)
- Test key (included)
- Spare glass: Z-EN54-G
- Surface mounting box: Z-CPSB-1
- Recessed mounting: 75 x 75 mm industry standard electrical box

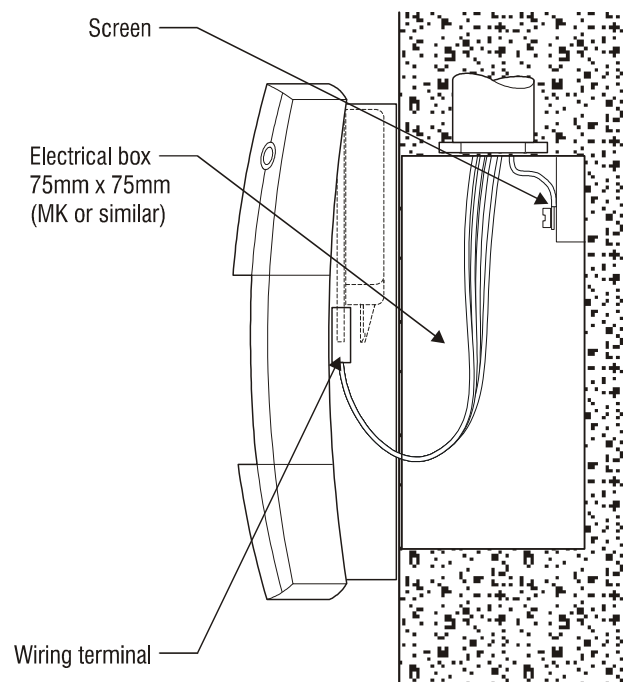
## Installation Instructions



Surface mount side view

993952-01.cdr

Figure 1: Surface mounting using Z-CPSB-1 surface mounting box.



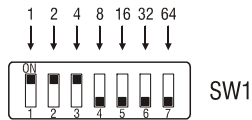
Recess mount side view

992822-01.cdr

Figure 2: Recessed mount and standard electrical box.

## Address switch settings

SW1 is used to assign device addresses. Each switch segment has a decimal value as shown in Figure 3.



Device address = 007

992825-01

Figure 3: ZP785-3 address switch

The sum of all the switch segments in the ON position determines the device address. You can set the device address for any value between 001 and 127 that is not used by another device on the same loop. For example, to select a device address of 007 you must set SW1-1, SW1-2, and SW1-3 to the ON position and the remaining switch segments to the OFF position.

## Wiring diagram

Figure 4 shows the terminal block connections for wiring the ZP785-3.

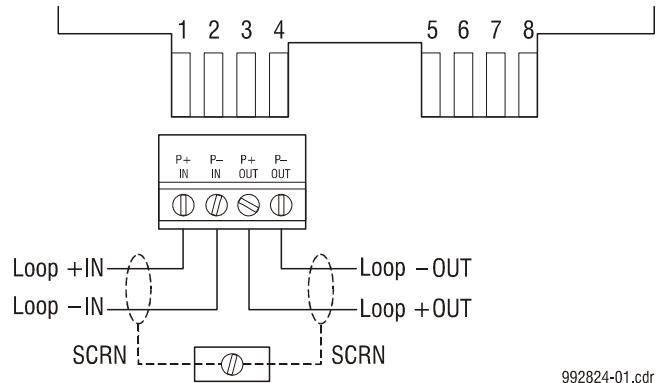
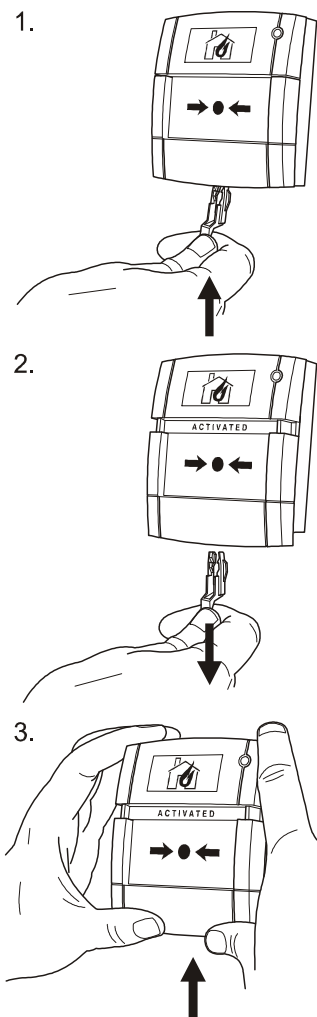
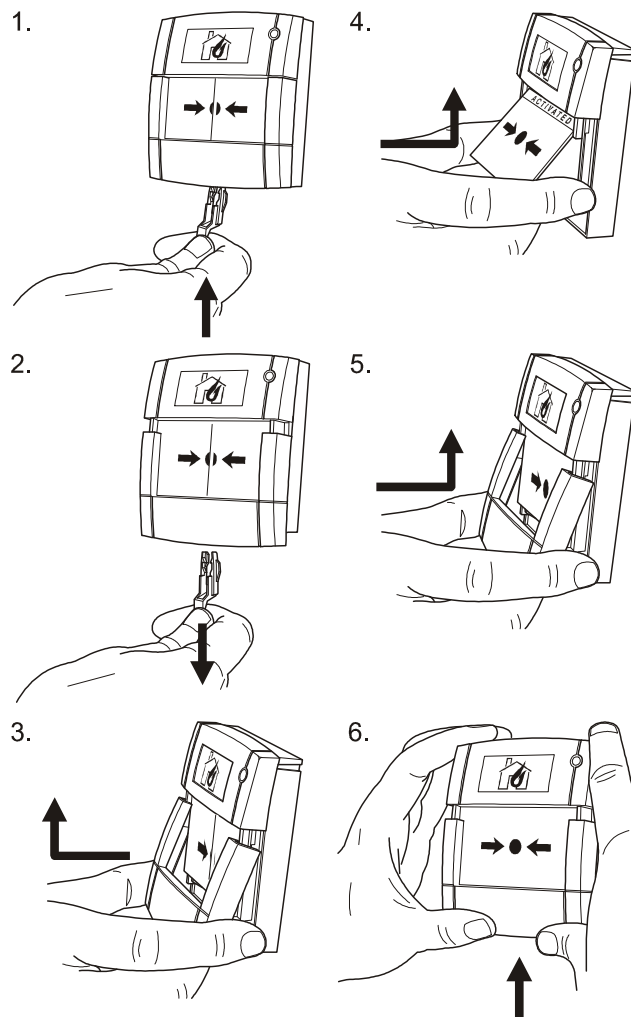


Figure 4: ZP785-3 wiring diagram

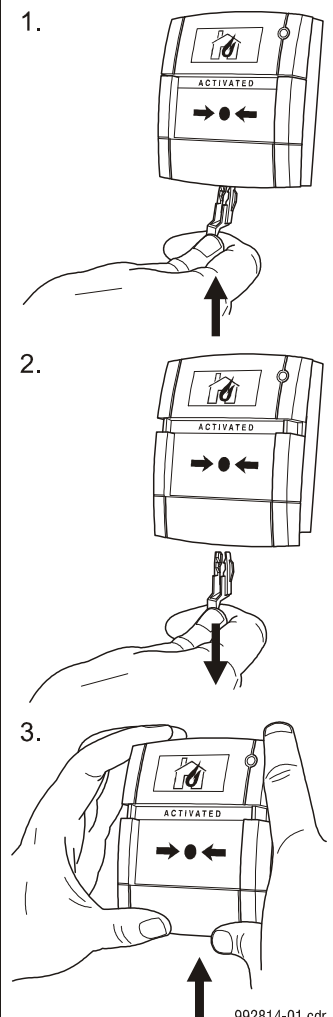
## To Test



## To Replace Glass / Resettable Element



## To Reset



992814-01.cdr