

# FP3 Manual Call Point

The FP3 is available in a variety of colours to suit different applications. The red is available as single pole and is certified to EN54-11 and CPD. The green, white and yellow are available as single or double pole.



## Single Pole

Resettable (Plastic)  
Non-resettable (Glass)  
Single  
12-24 Volts DC  
15A 125/250V AC  
Red LED

2.5mm Insertion type rated 10A 250V  
IP44. For internal use only  
-10 C to +55 C  
Case ABS: Operating elements glass or polycarbonate  
470 ohm, 680 ohm



Operating Element

Switch Type  
Operating Voltage  
Contact Rating  
LED Indicator  
Terminal Type  
IP Rating  
Temperature Range  
Materials

Selectable Resistor

## Double Pole

Resettable (Plastic)  
Non-resettable (Glass)  
Double pole change over switch  
12-24 Volts DC  
15A 125/250V AC  
Red LED

2.5mm Insertion type rated 10A 250V  
IP44. For internal use only  
-10 C to +55 C  
Case ABS: Operating elements glass or polycarbonate



**SINGLE PUSH PERSONAL ATTACK BUTTON**  
W: 180mm H: 306mm D: 58mm



**DOUBLE PUSH PERSONAL ATTACK BUTTON**  
W: 180mm H: 306mm D: 58mm



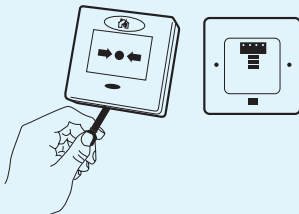
**PA PLUS SINGLE PUSH PERSONAL ATTACK BUTTON**  
W: 180mm H: 306mm D: 58mm



**PA PLUS DOUBLE PUSH PERSONAL ATTACK BUTTON**  
W: 180mm H: 306mm D: 58mm



**FP2 RESETTABLE CALL POINTS**  
W: 87mm H: 87mm D: 55mm



**FP3 MANUAL CALL POINT**  
W: 180mm H: 306mm D: 55mm



CQR Security  
125 Pasture Road, Moreton, Wirral  
United Kingdom, CH46 4TH  
Tel: +44(0)151 606 1000  
Fax: +44(0)151 606 1122  
Email: info@cqr.co.uk  
www.cqr.co.uk

A member of OSU GROUP OF COMPANIES

## PERSONAL ATTACK POINTS AT A GLANCE

	Operation	Material	Switch	Configuration (open/closed)	terminals	Tamper	Reset	Indicator	Backlit	max Voltage	Max Current
PASP1	Single	polystyrene	Reed	Selectable	5		Latch	Yes		50vdc	500mA
PASP1/BS	Single	ABS	Reed	Selectable	5		Latch	Yes		50vdc	500mA
PASP1/SS	Single	ABS	Reed	Selectable	5		Latch	Yes		50vdc	500mA
PA614/SS	Single	ABS	Reed/Contact	Selectable	5		Latch	Yes		50vdc	500mA
PADP2/WH	Double	ABS	Reed	Selectable	5		Latch	Yes		50vdc	500mA
PADP2/SS	Double	ABS	Reed	Selectable	5	Yes	Latch	Yes		50vdc	500mA
EPA/STD	Double	ABS	Reed	Selectable	7	Yes	Latch	Yes		50vdc	500mA
PAPLUSSP/WH	Single	ABS	Reed	Selectable	5		Latch	Yes		50vdc	500mA
PAPLUSSP/WH/LED	Single	ABS	Reed	Selectable	5		Latch	Yes	Yes	50vdc	500mA
PAPLUSSP/SS	Single	ABS	Reed	Selectable	5		Latch	Yes		50vdc	500mA
PAPLUSSP/SS/LED	Single	ABS	Reed	Selectable	5		Latch	Yes	Yes	50vdc	500mA
PAPLUSDP/WH	Double	ABS	Reed	Selectable	5		Latch	Yes		50vdc	500mA
PAPLUSDP/WH/LED	Double	ABS	Reed	Selectable	5		Latch	Yes	Yes	50vdc	500mA
PAPLUSDP/SS	Double	ABS	Reed	Selectable	5	Yes	Latch	Yes		50vdc	500mA
PAPLUSDP/SS/LED	Double	ABS	Reed	Selectable	5	Yes	Latch	Yes	Yes	50vdc	500mA

## CALL POINTS AT A GLANCE

	External dimensions (mm)	Surface mounted depth with backbox (mm)	Flush mounted depth without backbox (mm)	Monitoring resistors	Blocking diode	Microswitch rating	Activation indicator	Material	Complies with
FP2	87x87	55	20	470, 680 ohm	IN4001	5A 30 vdc	Fluorescent yellow indicator in window optional LED	Housing ABS, window polycarbonate	IP-44
FP3	85x85	55	20	470, 680 ohm	IN4001	12A 50V	Window displacement, fluorescent yellow indicator in window, high visibility 180° LED	Housing ABS, window glass or polycarbonate	EN54-11

### DATA SHEETS ALSO AVAILABLE:

- Cable & door loops
- Detection
- External sounders
- Internal sounders & speakers
- Freewave - wirefree system
- Hydrosure - fall detection for swimming pools & ponds



**distributed by:**

00.642

# CQR | EMERGENCY SWITCHES & ACCESSORIES



Panic Buttons

Manual Call Points

Junction Boxes

486.002

486.002

486.002

486.002

486.002

486.002

[www.cqr.co.uk](http://www.cqr.co.uk)



INNOVATIVE SOLUTIONS



# CQR | EMERGENCY SWITCHES & ACCESSORIES



CQR is one of the major manufacturers of security products in the UK, and as a leading supplier to the European security industry, has consistently been at the forefront of traditional and new product development since opening for business way back in the early eighties.

The CQR brand is recognised worldwide and has become synonymous with quality and reliability. CQR branded products are all designed with ease of installation and use in mind and meet many product standards worldwide, including also full compliance to ISO 9001:2000.

Now part of the OSL Group, CQR continues to bring new products to market, backed up by a sales and support service, we believe is second to none.

This Technical Data Sheet reflects our 'modern' approach to our industry and provides you with all the information you need on this section of our extensive range.

*All CQR's Emergency Switches are designed for Consistency, Quality and Reliability. Their proven track record over many years means they can be fitted as part of any installation with confidence, ensuring that top quality, reliable products are consistent throughout the system.*

*The useful 'at a glance' tables on the back of this leaflet gives you all the performance data you need to choose the right products for the job.*

*All of CQR's Emergency Switches are available from a wide range of specialist security Distributors who, together with our own technical back up, provide an excellent after-sales service as and when required.*

*However, should you require further information on any product in this leaflet, please give our Technical Support Team a call on +44(0)151 606 6311.*



## SINGLE PUSH PERSONAL ATTACK BUTTON

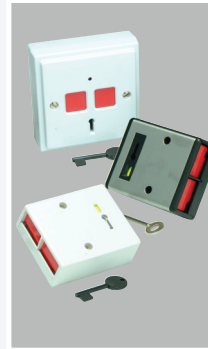


A range of single push buttons in plastic, stainless steel or brass with silent operation.

### OPTIONS:

WHITE	PASP1
BRASS	PASP1/BS
STAINLESS STEEL	PASP1/SS
STAINLESS STEEL WITH BELL/SIREN	PA614/SS
DIRECT DRIVE	
SPARE METAL KEY	KEYPAM
SPARE PLASTIC KEY	MOUKEY/BK

## DOUBLE PUSH PERSONAL ATTACK BUTTON



The double push range, in plastic and stainless steel, includes an electronic flush fitting unit with LED indication.

### OPTIONS:

WHITE	PADP2/WH
STAINLESS STEEL WITH TAMPER	PADP2/SS
ELECTRONIC SELF LATCHING PAB	EPA/STD
SPARE METAL KEY	KEYPAM
SPARE PLASTIC KEY	MOUKEY/BK

## SINGLE PUSH PA PLUS RANGE



A range of single push plastic and stainless steel personal attack buttons, also available with the addition of a LED which illuminates the button area enabling easy identification in the dark.

### OPTIONS:

WHITE PLASTIC	PAPLUSSP/WH
WHITE PLASTIC WITH LED	PAPLUSSP/WH/LED
STAINLESS STEEL	PAPLUSSP/SS
STAINLESS STEEL WITH LED	PAPLUSSP/SS/LED

## DOUBLE PUSH PA PLUS RANGE



The double push PAPLUS range, also in plastic and stainless steel, and with the same LED option as single push versions.

### OPTIONS:

WHITE PLASTIC	PAPLUSDP/WH
WHITE PLASTIC WITH LED	PAPLUSDP/WH/LED
STAINLESS STEEL WITH TAMPER	PAPLUSDP/SS
STAINLESS STEEL WITH TAMPER AND LED	PAPLUSDP/SS/LED

## FP2 RESETTABLE CALL POINTS



Fully key resettable red manual fire call point which offers almost all commonly used switch monitoring configurations in the one device. Available in white, yellow and green for use in other applications such as Emergency Door Release.

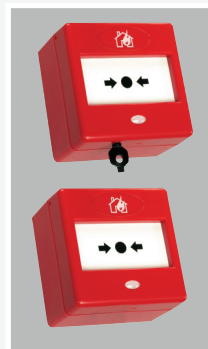
### AVAILABLE COLOURS:



### OPTIONS:

DOUBLE POLE VERSION  
PROTECTIVE LIFT UP COVER

## FP3 MANUAL CALL POINT



A unique manual call point, with high visibility LED, and which includes both frangible and resettable windows. It also offers user-friendly selection of the usual monitoring resistors. Complies with EN54-11

### PRODUCT CODE:

FP3/RD

### AVAILABLE COLOURS:



### OPTIONS:

PROTECTIVE LIFT UP COVER

## JUNCTION BOXES



A range of junction boxes manufactured in high impact polystyrene and fitted with anti tamper device.

### OPTIONS:

RECTANGULAR, 5 TERMINAL & 2 TAMPER	JB720
SQUARE, 8 TERMINAL & 2 TAMPER	JB730
24 TERMINAL & 2 TAMPER	JB730

### AVAILABLE COLOURS:

WHITE, BROWN	JB701/JB720
WHITE	JB730

## EMPTY BOXES



A range of white empty polystyrene plastic boxes suitable for both security and non-security applications.

### OPTIONS:

65x65x18MM	EB820
65x65x23MM	EB821
50x37x25MM	EB823
75x50x25MM	EB824
100x75x37MM	EB825
130x103x55MM	EB830