



ZP3AB-SCB-R

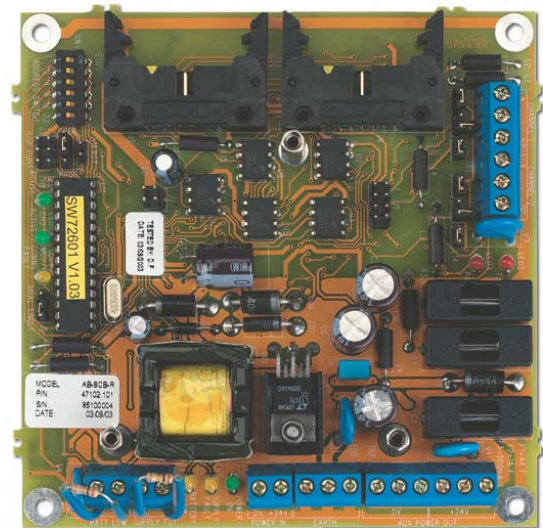
Serial control bus interface

System control at remote locations

The ZP3AB-SCB-R provides a remote interface on the system control bus wiring enabling repeat indication and system control, at locations remote from the main panel position.

Usually installed within auxiliary equipment cabinets, the interface is compatible with all ZP3AB optional facility boards, including the RL8 relay module, the MIP8 input card and the OP24 open collector output card.

The interface can be positioned anywhere on the system bus wiring (which it shares with remote display units (RDUs)). Driven from within the main control panel by an optional SCB-D driver board, a combination of up to 32 or 64 RDUs and SCB-Rs can be controlled dependant upon the ZP3 panel software.



RS485 protocol

Serial communication between the main panel and the remote interface units operates by RS 485 protocol, over twisted screened pair wiring. Total cable length, (regardless of the number of remote units connected to a main panel), can be up to a maximum of 2 kilometres.

Installation flexibility

Designed to provide installation flexibility, system wiring can be daisy chained or teed off with spurs. Wiring should be completed in data quality twisted screened pair cable with a minimum core diameter of 0.5 mm². Jumper terminating switches are provided on both driver and interface, which are set at the system commissioning stage.

The ZP3AB-SCB-D and SCB-R serial control bus driver and interface are part of the range of optional facility boards which can be added cost effectively to any ZP3 system, in order to provide extra facilities, which may not be a requirement of every system.

Standard Features

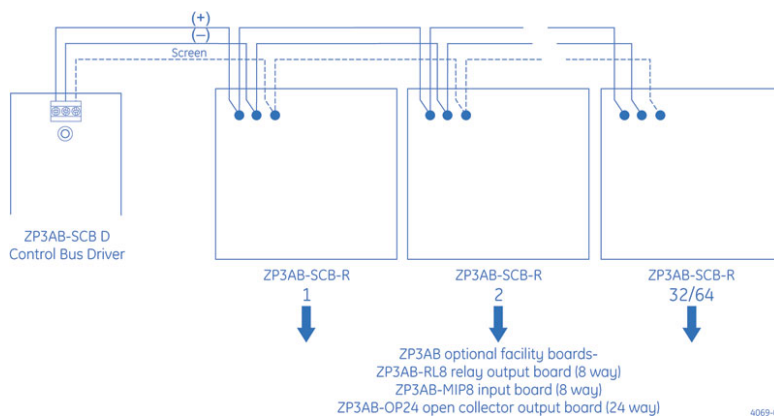
- Up to 32 or 64 remote serial interfaces - dependant upon control panel software
- Shares common wiring with remote display units
- RS 485 communication protocol
- Flexible wiring connection

ZP3AB-SCB-R

Serial control bus interface

Specifications

Model No	ZP3AB-SCB-R
Description	Serial control bus interface
Compatibility	ZP3 control panels, all ZP3 optional facility boards
Mounting	4 x 8M fixing holes
Comms protocol	RS 485
Operating voltage	24Vdc
Current	40 mA
Wiring	Two cores twisted screened pair max cable length 2km for all remote units connected to a ZP3 panel
Max per ZP3AB-SCB-D bus driver	32/64 (dependant upon control panel software) which can be any combination of ZP3AB-SCB-R interfaces and/or ZP3-RDUB1 remote display units
Temperature range	-10°C to +60°C
Humidity range	10% to 90% RH (non condensing)
Dimensions	PCB 120mm (H) x 120mm (W)
Weight	166g
Publication No	PS0471



Ordering Information

Part No.	Description
ZP3AB-SCB-R	Serial control bus interface

As a company of innovation, GE Security reserves the right to change product specifications without notice. For the latest product specifications, visit GE Security online or contact your GE Security sales representative.

IPS-ZP3AB-SCB-R-2008-07-25 09:56:44 Released : 17.07.2007

UK Sales: 8 Newmarket Court, Chippenham Drive, Kingston, Milton Keynes, MK10 0AQ, United Kingdom, Telephone +44 (0) 1908 281981, Fax +44 (0) 1908 282554
South Africa: Zitton House, 555 Voortrekker Road, Maitland, 7405, P.O. Box 181, Maitland, 7404, South Africa, Telephone +27 (0)21 506 6000, Fax +27 (0)21 506 6050