

Battery Smoke Detector

FH20/O/9, FH20/O/9/230

- Designed for home use
- Sounder 85dB
- Up to 38 detectors networkable
- Test button for battery test
- Versions for battery and mains operation
- VdS approval



Description

The Battery Smoke Detector Series FH20 uses an optical sensing chamber that is based on the scattered light principle. If smoke particles enter the sensing chamber, the integrated signalling device will be activated, thereby warning early of the fire danger.

The detector which can be easily mounted and handled and which has a pleasing design, is ideally suited for use in private living areas.

Up to 38 detectors of the same brand can be networked with each other. In the event of an alarm, the acoustic signalling devices of all detectors are activated together. In this way, the affected area is alarmed

selectively and a timely escape from the endangered area is made possible.

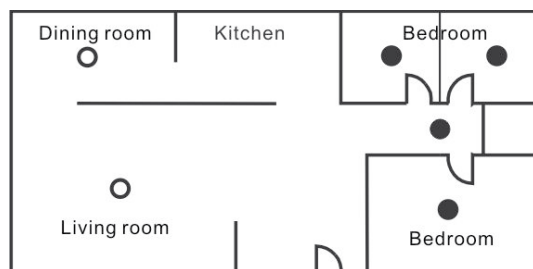
A red status-LED indicates the periodical function check and the alarm activation. On the mains voltage model a green LED additionally indicates the proper mains voltage supply.

By means of the test button, a battery test can be carried out at any time. The „Battery empty“ message will be acoustically indicated for 30 days. During that time the detector is fully functional.

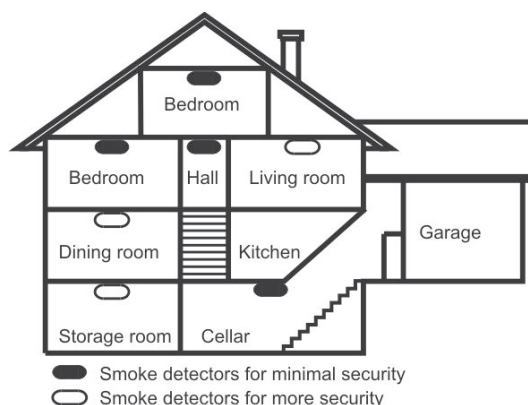
Arrangement of smoke detectors

In order to ensure complete protection in an apartment or single-family home, a Battery Smoke Detector Series FH20 must be installed in every living room or side room, in the hall, in the basement and in the attic. As

minimum configuration, one detector per floor – for monitoring the escape route – and additionally one smoke detector per bed room must be installed.



- Smoke detectors for minimal security
- Smoke detectors for more security



- Smoke detectors for minimal security
- Smoke detectors for more security



0786-CPD-21036



Surface mounting box

The Surface Mounting Box FH20/AP-1 is needed if a Battery Smoke Detector Series FH20 is networked with further detectors or if it is mains powered, and for surface mounted cabling of the detector or – in case of flush cabling – if there is no flush-mount installation box that can accommodate the terminals.



Specifications

Operating voltage	9V block battery
Recommended batteries	GP #1604G Duracell #MN1604
Warning signal – Replace battery	min. 30 days
Sound level	min. 85dB(A) / 3m distance
Ambient temperature	0°C to +50°C
Relative humidity	10 – 85% (no condensation)
Dimensions Ø × H	100 × 35 (mm)
Colour	white
Weight	125g (incl. battery)
Approvals	VdS G211031 0786-CPD-21036

FH20/O/9 – battery operation

Battery life	typ. 3 years
Order number	241150
Order name	Optical Battery Smoke Detector/9V FH20/O/9

FH20/O/9/230 – mains and battery operation

Mains voltage	100 – 240VAC, 50 – 60Hz
Battery life (mains voltage constantly available)	typ. 5 years
Order number	241151
Order name	Optical Battery Smoke Detector/9/230V FH20/O/9/230

Surface mounting box

Dimensions Ø × H	92 × 26 (mm)
Weight	30g
Order number	246169
Order name	Surface Mounting Box FH20/AP-1

Building Safety. Building Security.

