



## AS376

Fire sounder, multi tone, high output, IP66

### General

---

The AS376 is a high output electronic sounder for fire alarm applications. It offers a IP66 rating, which makes it ideal for outdoor applications. It also features a special base containing all wiring connections and allow for easy removal/placement of the sounder. To allow for even more flexibility, the user can select between 64 tones and also have the option of a 3rd stage tone.

### Easy and Fast Installation

---

The AS376 sounder allows faster installation and maintenance thanks to an innovative mounting base. Connections are made to the base during the initial wiring phase, which results in faster and more reliable installation. In addition, the head clicks into place and is fixed by four quarter turn fasteners, avoiding the need to screw up four individual screws thus enabling faster installation and accurate seal compression for weatherproofing.

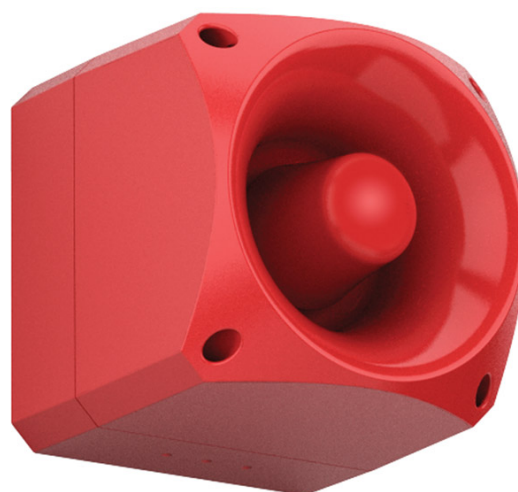
### Efficient and versatile

---

The AS376 provide high sound output at a low current, thus reducing power requirements and system cost. The AS376 sounder is supplied with a volume control as standard, allowing final audio adjustments to be made during installation.

With a choice of 64 different tones (see tones table in manual), which are switch selectable, the required tone can be selected during installation. A second and third tone, is available if extra wires are installed in the sounder circuit.

IP66 as standard, means that the AS376 can be installed in almost any location.



### Standard Features

---

- High sound output
- Low current consumption
- 64 Tones user selectable
- Automatic synchronisation
- Volume control
- Wiring directly to base
- Three stage alarm
- IP66

# AS376

Fire sounder, multi tone, high output, IP66

## Specifications

Operation	Continuous
Supply voltage	
EN54-3 / fire applications	17 - 60 VDC
non-fire applications	10 - 60 VDC
Current consumption	
(see tone table in manual)	10 - 50mA @ 24 VDC
Sound output @ 1 metre	
(see tone table in manual)	104 to 116dB(A) @ 24 VDC
Number of tones	64
Automatic synchronisation	Phased start
Line monitoring input	Polarised input
Housing	High impact polycarbonate
Ingress protection	IP66
Operating temperature	-25°C to +70°C
Dimensions	
( W x H x D )	166 x 166 x 149 mm
Weight	1100g
Color	Red

## Ordering Information

Part No.	Description
AS376	Fire sounder, multi tone, high output, IP66
AS377	Fire sounder-beacon, multi tone, high output, IP66

