

ADPRO PRO E PIR firmware update manual

FlashLoader software 2.0 or higher

Date: 2018-03-15

PIR models: PRO E-18, PRO E-18H, PRO E-18W, PRO E-18WH, PRO E-30, PRO E-40, PRO E-45, PRO E-45H, PRO E-45D, PRO E-45DH, PRO E-100, PRO E-100H, PRO E-400H, PRO E-18WRFe, PRO E-18WRFn PRO E-45RFe, PRO E-45RFn PRO E-100RFe, PRO E-100RFn

1. Update process and requirements:

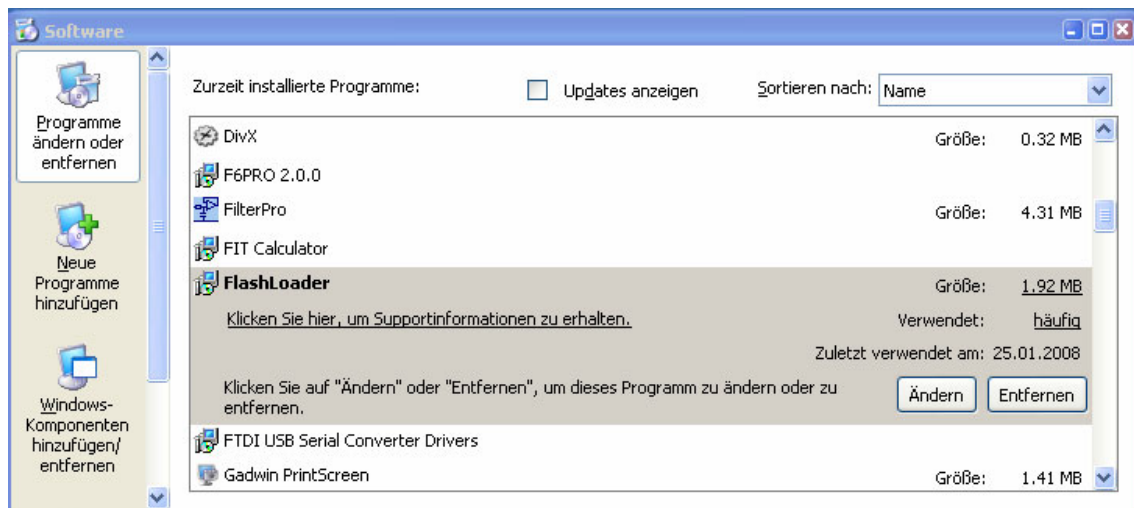
It is always recommended to use the latest FlashLoader software to perform a PIR firmware update. The Flash Loader software (and corresponding drivers for USB adapters) can be downloaded from the Xtralis Security solutions support Site <http://www.xtralissecurity.com>.

Please log in with your personal credentials and search for “FlashLoader PIR Update” or file no. 29461. This .zip file contains the Flash Loader Software and the latest firmware versions of the mentioned detectors.

Important: Updating the firmware will cause all detector settings including the output settings to be reset factory settings. Only the detector's ID will remain. We recommend that you save the both the detector settings and the output settings to separate files which can be loaded again after having done the update.

2. Remove old FLD versions from your computer

Go to PC Control Panel → Programs and Features → Add/remove programmes → remove FlashLoader



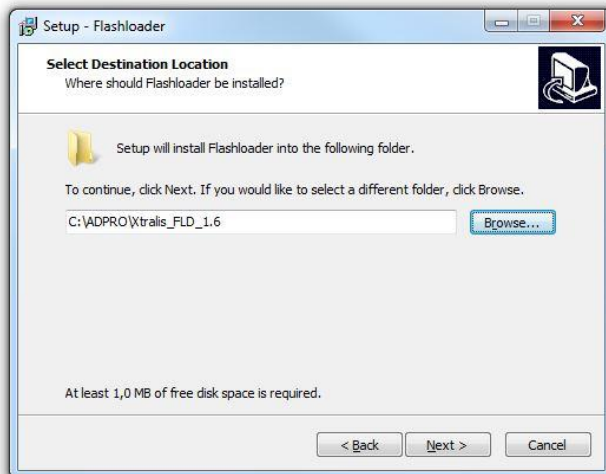
3. Installation FlashLoader Software

Execute the setup file: „Setup_AdproFlashloader_2.0.exe” for both 32bit and 64bit Windows operation systems and follow the installation dialogues.

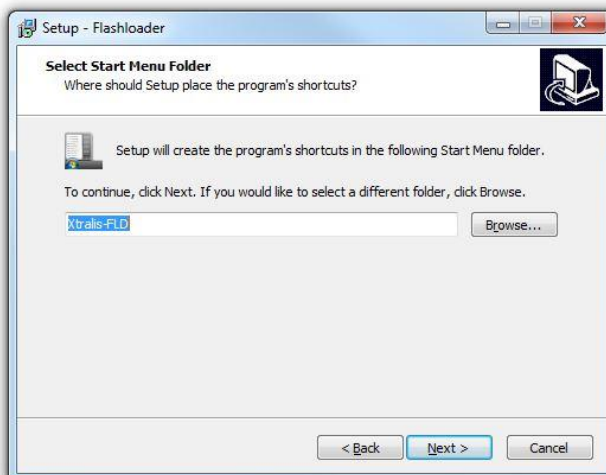
3.1 Welcome Screen to the Flashloader Setup Wizard V1.6 and above, click Next



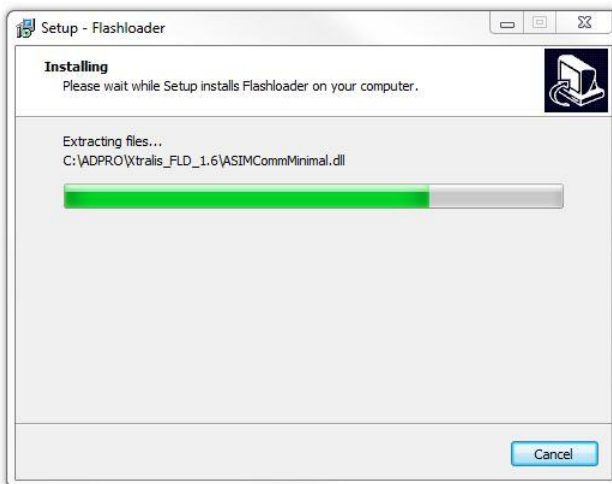
3.2 Select installation folder and click Next



3.3 Select Start Menu Folder and click Next



3.4 Click Install and the installation process of the FlashLoader software begins



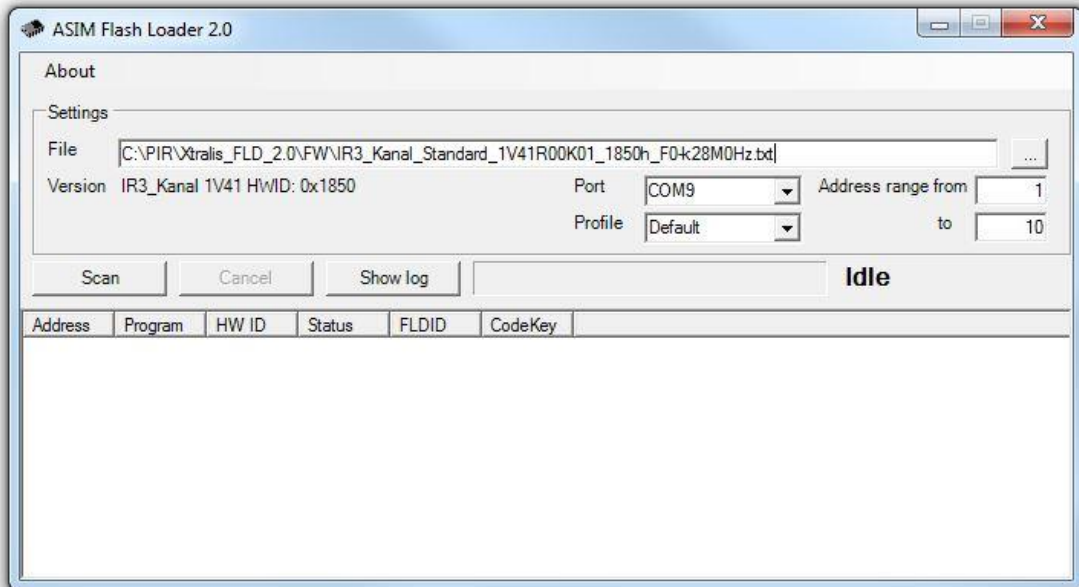
3.5 Click Finish to exit the Setup



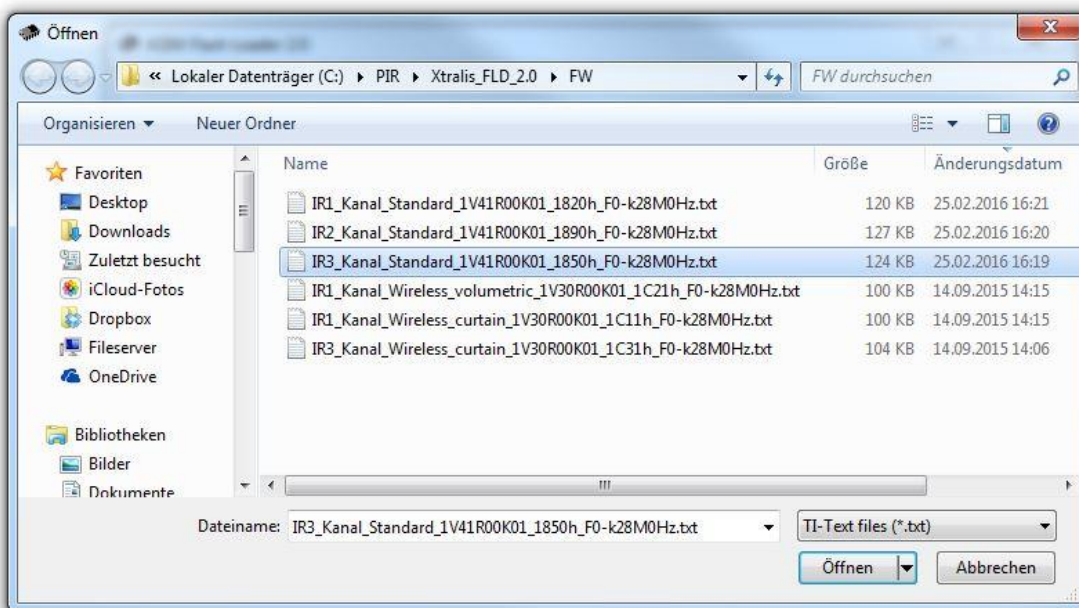
4. Firmware update with FlashLoader software

Before a firmware update can be done the PIR must be connected to the PC with a corresponding RS485 adapter, such as the ADPRO IFM-485-ST Interface Module for Standard PRO E-series or the PRO E-IFM-RF USB Interface module for Wireless detectors. Please check the PC Hardware Manager and make sure that the COM port and its corresponding driver is configured properly.

4.1 Run FlashLoaderGui.exe



4.2 Select a firmware file



Select a firmware that belongs to the corresponding detector type. The list below shows the detector model, type and firmware name that needs to be selected.

Detector Model	Detector type	Firmware name
PRO E-18, PRO E-18H, PRO E-18W, PRO E-18WH, PRO E-30, PRO E-40, PRO E-45, PRO E-45H	Single-channel	IR1_Kanal_Standard
PRO E-45D PRO E-45DH	Dual-channel	IR2_Kanal_Standard
PRO E-100, PRO E-100H, PRO E-400H	Triple-channel	IR3_Kanal_Standard
PRO E-18WRFe, PRO E-18WRFn	Single-channel volumetric	IR1_Kanal_Wireless_volumetric
PRO E-45RFe, PRO E-45RFn	Single-channel curtain	IR1_Kanal_Wireless_curtain
PRO E-100RFe, PRO E-100RFn	Triple-channel	IR3_Kanal_Wireless_curtain

4.3 Select the correct COM port and Profile “Default”



The screenshot shows a software window with the following settings:

- Port:** A dropdown menu showing "COM6".
- Address range from:** A text box containing "1".
- Profile:** A dropdown menu showing "Default". Below it, a list shows "Default" (highlighted) and "Remote".
- to:** A text box containing "10".
- Idle:** A button labeled "Idle".

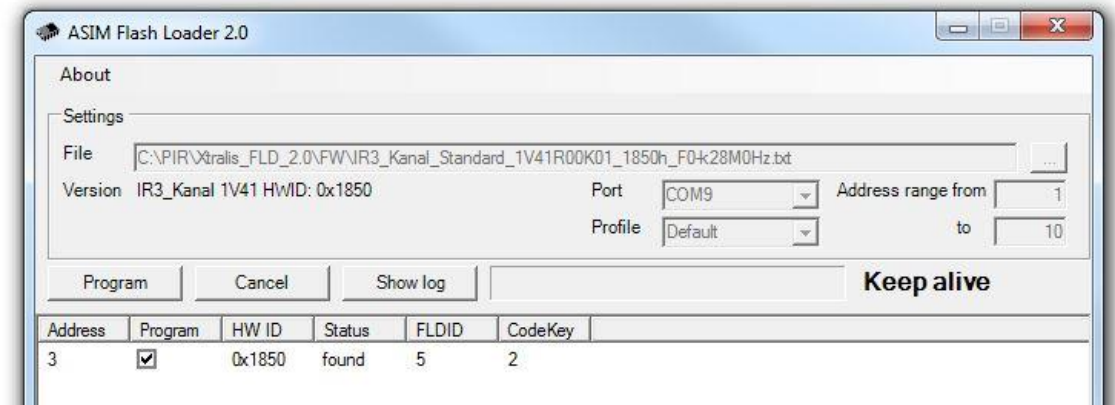
Select the connected COM port and the address of the detector. In default settings an **address range** of 1 to 10 is supported. You can limit the address range of the detector you wish to flash (the smaller the range, the faster the search). It is recommended to use the **Default** profile. When the update fails the **Remote** profile can be used which allows a more secured but slow update.

Hint: FlashLoader versions older than 2.0 have the profiles Ethernet and RS458 available. In this case the **Ethernet** profile needs to be selected.

4.4 Scan for connected detectors

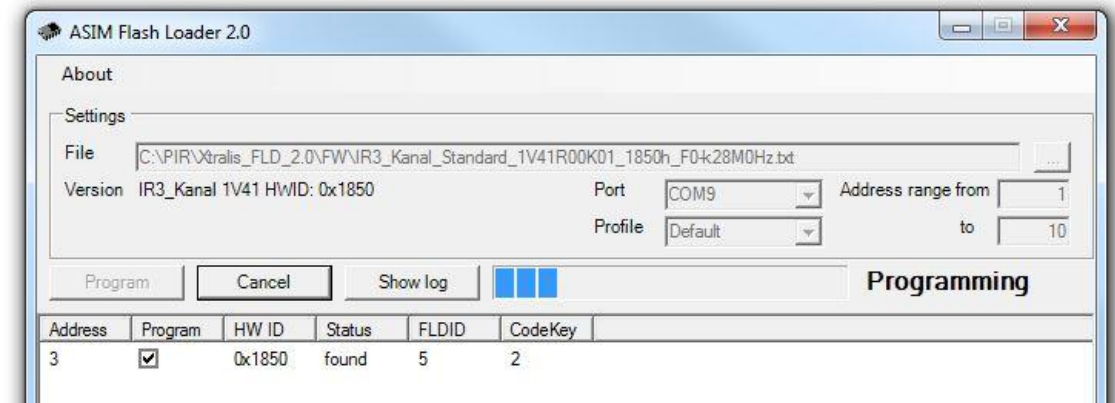
Click **Scan** button and the connected PIRs will be displayed in the list. Select one or more you wish to flash and continue with the **Program** button.

Hint: While multiple detectors can be programmed at the same time, they have to be of the same type (according to the overview above) and need to be connected via the same RS485 but with different RS485 IDs for each detector.

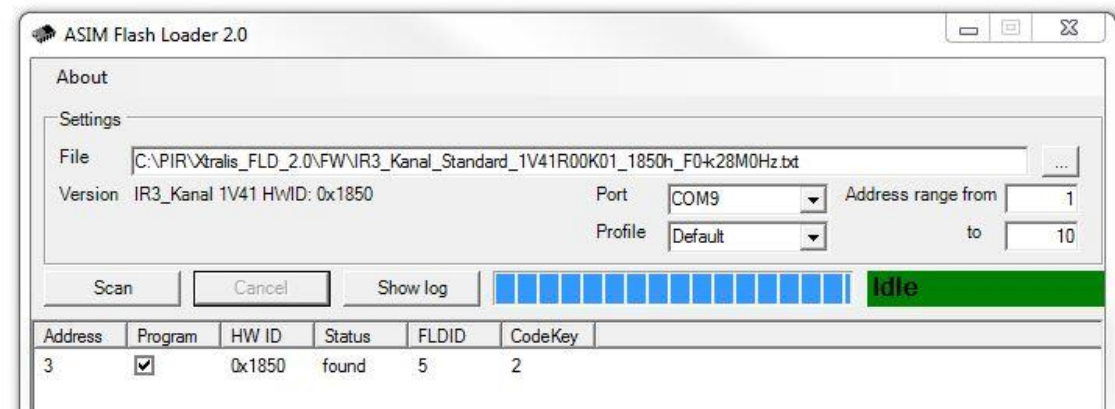


4.5 Program the detector

The firmware update takes approximately 60 seconds



As soon as status shows **Idle** and the right bar turns green, the firmware has been updated successfully.



4.6 Status of Update

Click on the **Show Log** button. When the Log shows OK status the update has been done successfully.

